



www.kamkiu.com

본사 HQ:  
( )  
Kam Kiu Aluminium Products Group Ltd.

Add: Rm17, 18/F, Concordia Plaza, 1 ScienceMuseum Road,  
Tsimshatsui East, Kowloon, Hong Kong  
Tel: +852 2302 0808  
Fax: +852 2302 0062  
Email: info@kamkiu.com

생산 기지 **Production Facility:**  
( )  
Taishan City Kam Kiu Aluminium Extrusion Co.,Ltd.

Add: Dajiang County, Taishan City, Guangdong,China  
Post: 529261  
Tel:+86 (750) 543 8596  
Fax: +86(750) 543 8173





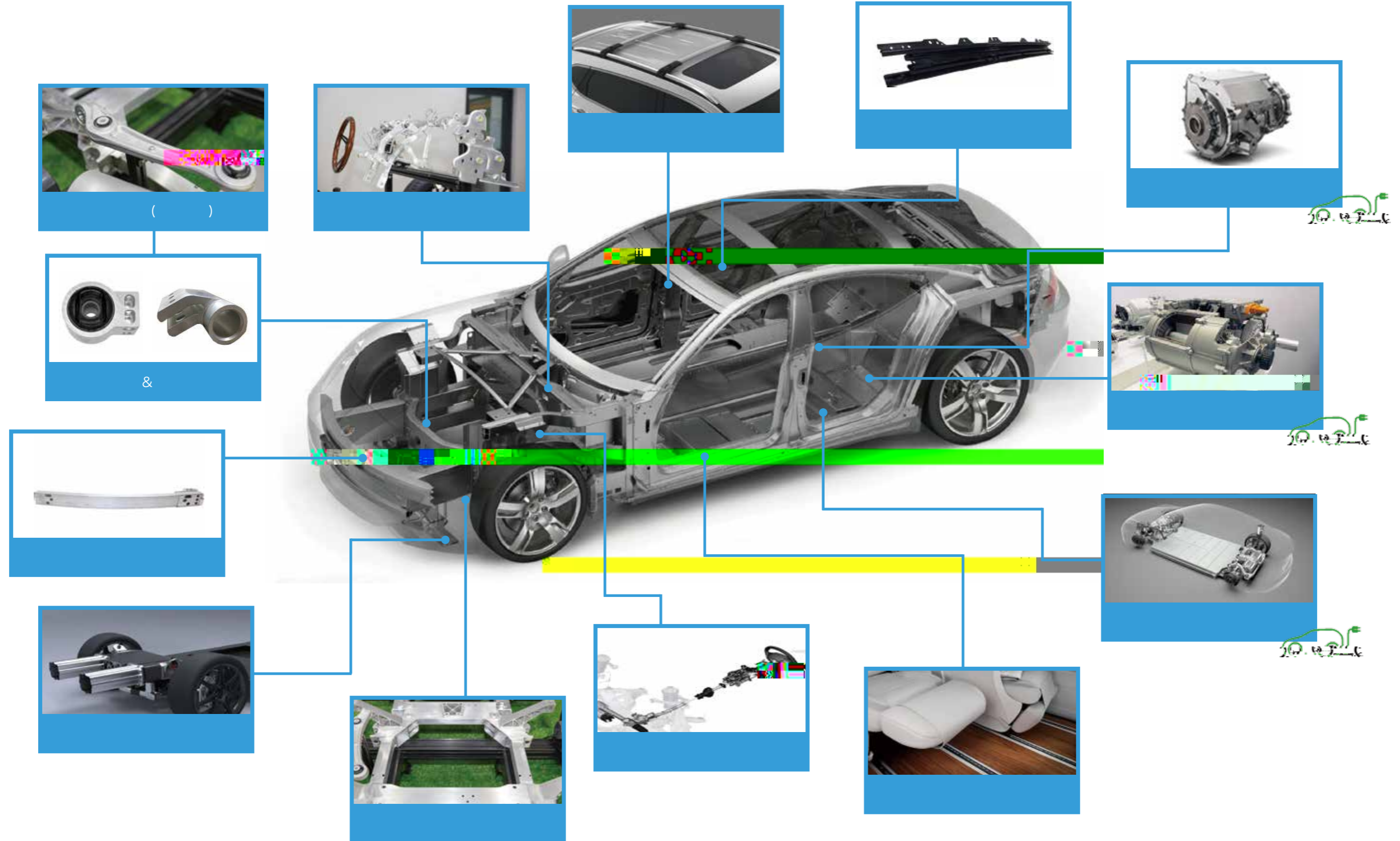
ISO9001:2015

IATF16949:2016

ISO14001:2015  
GB/T24001:2016

OHSAS18001:2007

( )



CNC 가

3 ~5 CNC가  
가



가

가  
가



가

3 / , 5  
1 5000 /



가



가 11,000



PMT

ThermoFisher  
SCIENTIFIC



가



: 0-50KN, 0-200KN, 0-100KN



가

Romdot

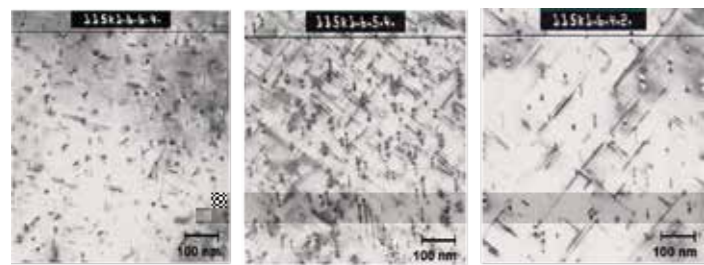


CMM3

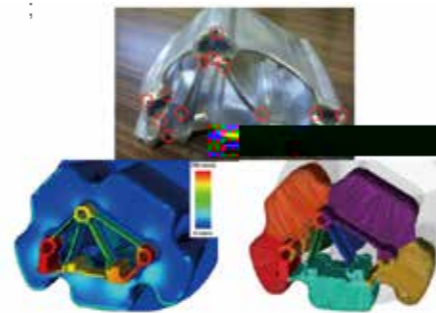
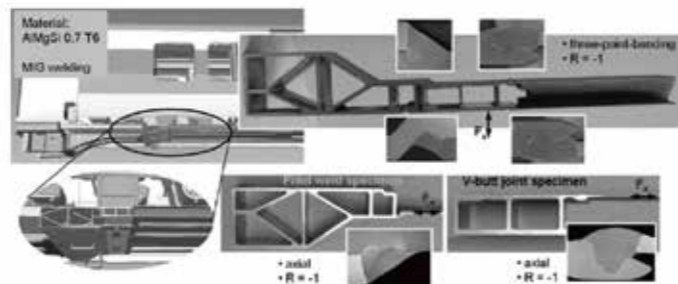
HEXAGON  
METROLOGY



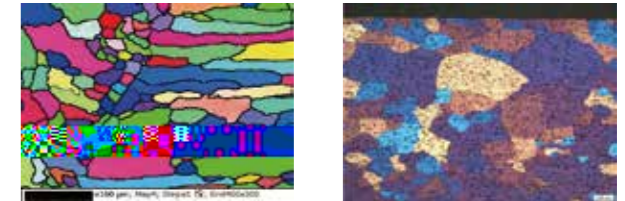
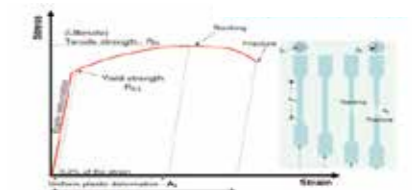
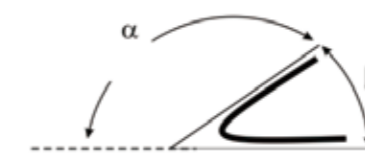
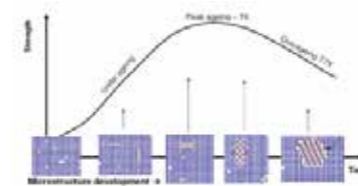
- 가 (MIG\FSW)



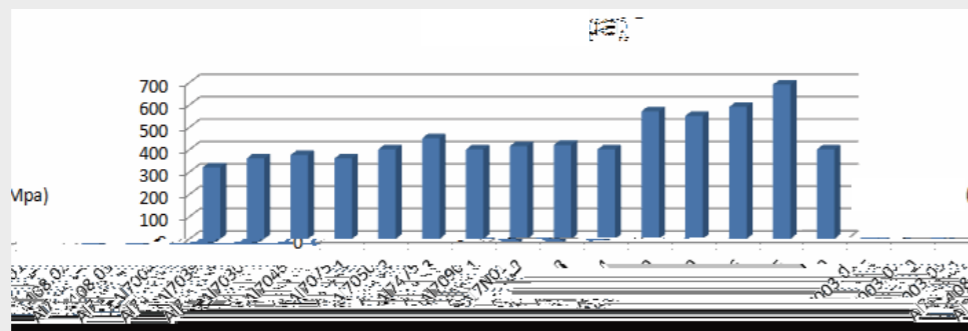
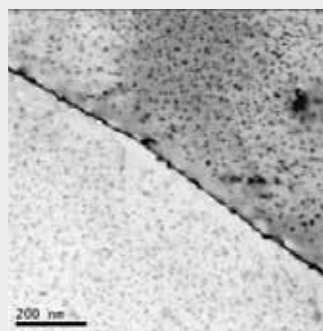
Peel



SCC IGC



,GB/T 31467	GB/T 31467	X	
	GB/T 31467	X	
, Z.B.	GB/T 31467	X	(X)
		(X)	X



30 km/h,

200kn

2016

<IATF16949

>

가

가

SAP

가

